


MAGNETIC FLOAT LEVEL TRANSMITTER

LT SERIES

The vertical float level transmitter consist of a float with a built in permanent magnet, and guide tube built in many reed switch and resistances becoming a measuring sensor. The float rise up or fall down in liquid inducting measuring sensor to make proportional voltage which combine a V/I converter turn to a 4~20mA DC output signal. To provide a liquid level control function.

Technical Data

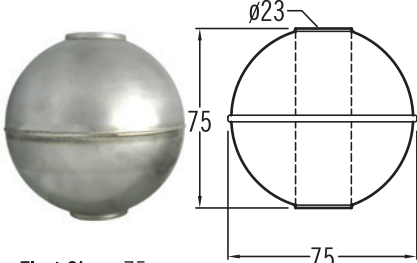
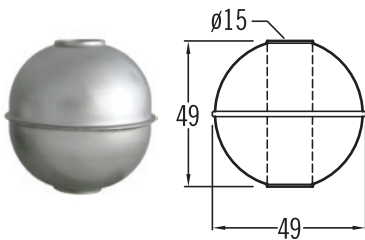
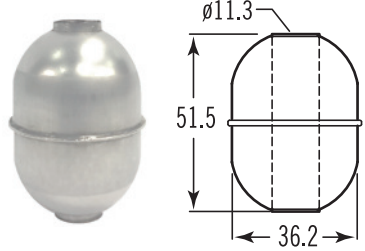
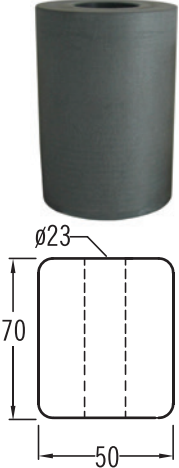
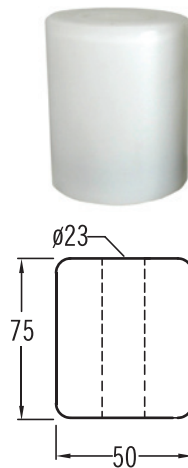
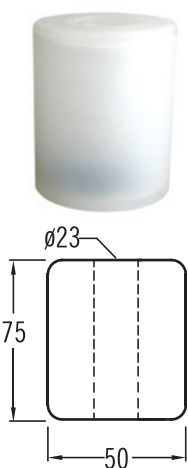
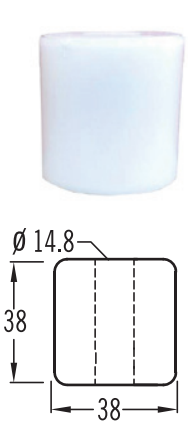
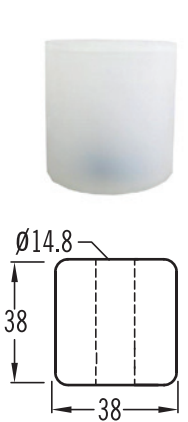
- Resolution Accuracy:** ±12mm standard; ±6mm on request
- Material:** Wetted parts are available for SS304, SS316, SS316L, PVC, PP, PVDF; and others on request.
- Output Signal:** 4~20mA DC (500~20 kΩ) 2-wire
- Power Supply:** 11V~30V DC
- Enclosure Housing:** Weather Proof; Explosion Proof available
- Max. Range:** 6000mm (SS316, SS304, SS316L, PVC, PP, PVDF)
- Limit Operating Temperature:** -20°C~+100°C
- Limit Operating Pressure:** 3~30 kg/cm² (please refer to the Float Specification)
- LCD Display:** available
- *HART® Communication:** available
- Two Wire Transmitter with HART® Protocol** 
 - Galvanic Isolation
 - Suitable for application in SIL 2 installations



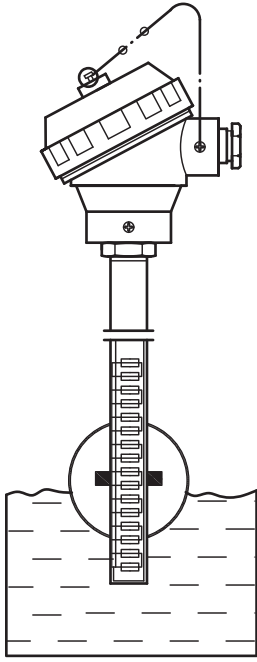
Approvals:



Float Specification

ø75x75mm (SUS316)	ø49x49mm (SUS316)	ø36.2x51.5mm (SUS316)	ø50x70mm (PVC)	ø50x75mm (PVDF)	ø50x75mm (P.P)	ø38x38mm (P.P)	ø38x38mm (PVDF)
 <p>Float Size: ø75 Max. Working Pressure: 30 kg/cm² Working S.G: ≥0.68 The Guide Tube Size: ø20 Material: SUS316 Limited Operating Temperature: -20~140°C</p>	 <p>Float Size: ø49 Max. Working Pressure: 30 kg/cm² Working S.G: ≥0.68 The Guide Tube Size: ø12 Material: SUS316 Limited Operating Temperature: -20~140°C</p>	 <p>Float Size: ø36.2 Max. Working Pressure: 30 kg/cm² Working S.G: ≥0.8 The Guide Tube Size: ø9.5 Material: SUS316 Limited Operating Temperature: -20~140°C</p>	 <p>Float Size: ø50 Max. Working Pressure: 3 kg/cm² Working S.G: ≥0.7 The Guide Tube Size: ø18 Material: P.V.C Limited Operating Temp.: 0~70°C</p>	 <p>Float Size: ø50 Max. Working Pressure: 5 kg/cm² Working S.G: ≥0.8 The Guide Tube Size: ø20 Material: PVDF Limited Operating Temp.: 0~120°C</p>	 <p>Float Size: ø50 Max. Working Pressure: 3 kg/cm² Working S.G: ≥0.7 The Guide Tube Size: ø21 Material: P.P Limited Operating Temp.: 0~60°C</p>	 <p>Float Size: ø38 Max. Working Pressure: 3 kg/cm² Working S.G: ≥0.7 The Guide Tube Size: ø12,SS316 Material: P.P Limited Operating Temp.: 0~60°C</p>	 <p>Float Size: ø38 Max. Working Pressure: 5 kg/cm² Working S.G: ≥0.7 The Guide Tube Size: ø12,SS316 Material: PVDF Limited Operating Temp.: 0~120°C</p>

Dimension



NOTE.
Head Type and Float Size, please refer to the head type and float size table.

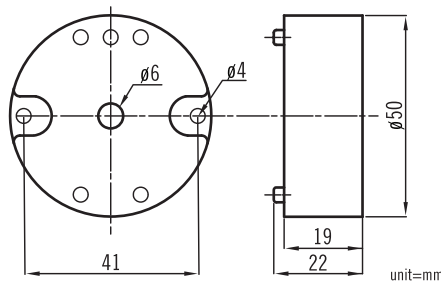
THREAD	FLANGE	WITHOUT CONNECTION
LTHA Series 	LTF A Series 	LTG Series
THREAD	FLANGE	
LTHB Series 	LTFB Series 	

WWW.NEW-FLOW.COM • TEL: 886-7-8135500 • FAX: 886-7-8225588 • Email: info@new-flow.com

Transmitter Type

Potentiometer I/P
Output Signals: 4~20mA DC,
 Load resistance R_L (max)=(V_s-10) x 50 Ω (2-wire)
Input Range: 100 Ω to 45K Ω (3-wire)
Output Adjustment Range: Zero adjustment 0~15%
Accuracy: $\pm 0.1\%$ F.S (at 23°C)
Linearity: $\pm 0.1\%$ F.S
Supply Voltage: 10~30V DC
Temp. Coefficient: $\pm 0.02\%$ / °C
Operating Temp.: -5~+70 / °C
Operating Humidity: 0~90% RH
Terminal: DIN Type
Installation: Head and Wall Mounting
Case Material: Nylon 6 resin (Black)
Weight: about 50 grams

Dimensions

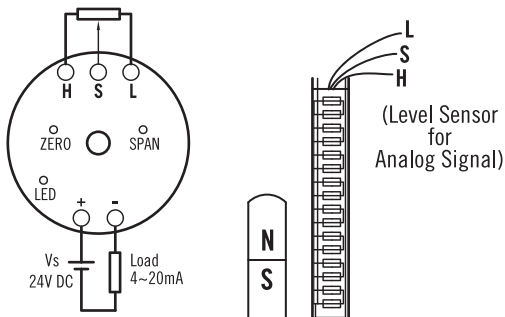


*HART® Communication: Available
Two Wire Transmitter with HART® Protocol
 – Galvanic Isolation
 – Suitable for application in SIL 2 installations



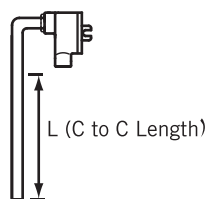
GL-T

Sketch Terminal & Level Indicating Strip



Level Sensor Unit

Model: LTG



Features

- ISO 9001 and CE certificate
- High immunity to external noise
- LED indication and DC power polarity protection
- High reliability, lasting durability and low cost

Application

- Position of valve, damper and other devices

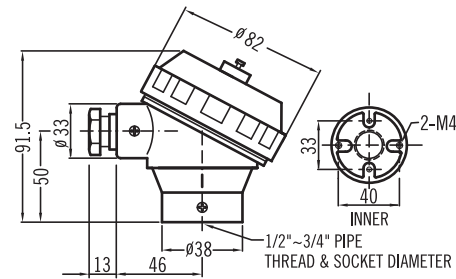
Head Type Technical Data



HN TYPE

HN Type

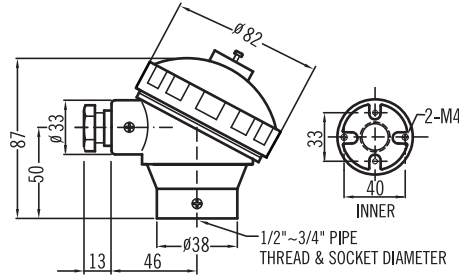
Protection: IP68
Material: Aluminum Alloy
Weight: 264g
Protection tube connection: 1/2", 3/4" (PF, NPT, BSP), M20X1.5
Extension wire connection: 1/2", 3/4" (PF, NPT, BSP), M20X1.5
 Other specifications are available on request.



HP TYPE

HP Type

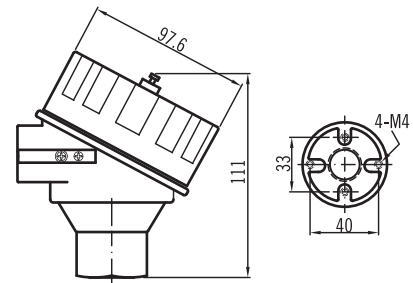
Protection: Weather Proof Type
Material: Polypropylene
Weight: 112g
Protection tube connection: 1/2" NPT, 1/2" BSP
Extension wire connection: 3/4" NPT, M20X1.5
 Other specifications are available on request.



XDS TYPE

XDS / XDA Type

Material: XDS-SS316; XDA-Aluminum alloy
Weight: XDS-1278 g; XDA-460 g
Protection tube connection: 1/2" PF, 3/4" PF, 1/2" NPT, 3/4" NPT, 1/2" BSP, 3/4" BSP, G 1/2", G 3/4", M20x1.5, M24x1.5, M25x1.5
Extension wire connection: M20x1.5, M25x1.5, 1/2" NPT, 3/4" NPT
EC certificate no.: BSI 07 ATEX 1532458U
ATEX directive code: II 2 G D
Standard code: Ex d IIC T6, Ex td A21
 T100°C IP68

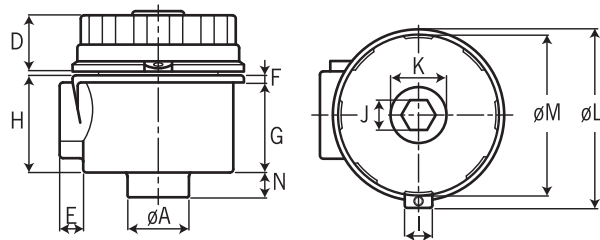


XDA TYPE

FM Approvals: XP/II/1/ABCD/T6; DIP/II,III/1/EFG/T6; Type 4X
 Explosionproof for Class I, Division 1, Groups A,B,C and D; and dust-ignitionproof for Class II, III Division 1, Groups E,F and G, hazardous (classified) locations; indoor / outdoor (NEMA Type 4X).

CS_Series (CSB Type) / CA_Series (CAB Type)

Protection: Explosion Proof Type
Material: CS-SS316; CA-Aluminum Alloy
Extension Wire Connection: Female G 1/2", 1/2" NPT, M20 x P1.5 and G 3/4", 3/4" NPT, M25 x P1.5



Type	Dimensions											unit:mm
	øA	D	E	F	G	H	I	J	K	øL	øM	
CS	34.7	33	13.8	4.2	52.8	57	13.5	17.5	32.8	102.8	94.5	14.5



CSB & CAB TYPE



D-1000-G (General Type)

D-1000-G (General Type)

Protection: Explosion Proof, Class II, Groups A, B, C & D; Class II, Groups E, F & G; NEMA 4X
Material: Aluminum or SS316 available
Extension Wire Connection: Female 1/2" or 3/4" NPT, others option available

