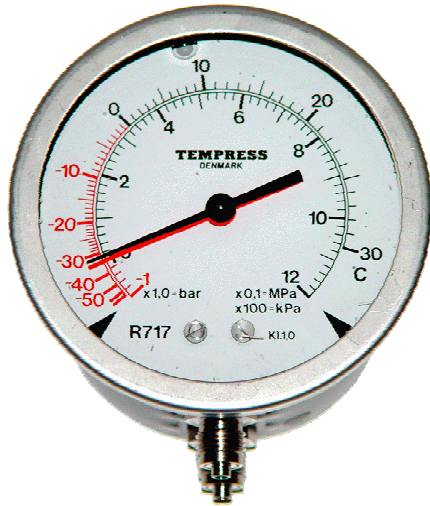


Duplex Refrigeration Pressure gauge

Type A11 - Front Line

Date: September. 2002

Sheet No.:1-41GB



Duplex Refrigeration pressure gauge

- Liquid filled
- Connection: bottom or rear
- Direct, wall or panel mounting
- More than 40 different connecting threads
- Long-term stable
- Vibration protected
- Many types of refrigeration scales, graded in pressure and temperature

Application

This series of pressure gauges is well suited for application in the refrigeration industry.

The double pressure gauge is specifically intended for 2-stage plants for measuring the suction and medium pressure or the medium and condensation pressure. Furthermore, it is also applicable for measuring the pressure drop over filters in refrigeration plants.

Module System

The TEMPRESS program of connecting nipples and mounting auxiliaries makes it possible to deliver thread type and mounting form as required.

The program of refrigeration scales cover most refrigeration media available on the market. The scale can be delivered with 1, 2 or 3 refrigeration media.

Temperature Compensation

The unique system for temperature compensation ensures a correct reading even under heavily fluctuating ambient temperatures (0-60°C)

Safety

The temperature compensation system simultaneously works as blasting protection, i.e. if the measuring system blasts due to overpressure, the temperature compensation is blown out from the back of the instrument.

Specifications	
Pressure Gauges:	DN 80 type A1102 DN 100 type A1103 DN 160 type A1104
Case material:	Steel, black enamelled
<i>Option:</i> Glass face: Bezel:	AISI 316 (only DN100) Acrylic AISI 316
Liquid filling	Glycerine
Connection:	Brass, steel or AISI 316
Measuring system:	Brass/bronze, steel or AISI 316
Range:	-1-0+12 bar/°C -1-0+25 bar/°C <i>Option:</i> Other ranges on request
Accuracy:	Cl. 1.0 (± 1% FS)
Refrigeration media:	R22, R134a, R404, R507, Ammonia (R717) Other media on request

TEMPRESS reserves the right to changes without notice

Agent/Dealer:



TEMPRESS A/S

Nordlandsvej 64-66
DK-8240 Risskov, Denmark
Tel.: +45 8932 5210
Fax.: +45 8932 5213
sales@tempress.dk
www.tempress.dk

DUPLEX PRESSURE GAUGE, TYPE A11: DN 100

TEMPRESS A/S

Fax: +45 89325213, Mail:
tempress@tempress.dk

Company
name:

Quantity:

Price:

Requested
delivery time:

Comments:

Equipment for refrigeration

Edition: 000212-8800-001/2/3 + rev.

Order no.:

Date:

Initials:

Signature:



Choice number:	1	2	3	4	/	A	B	C	D	E	F	G	H	I	J	K	L
Ordering example:	A10	03	01	10	/	01	1	1	16	07	13	O	00	00	0	00	00
Your ordering:	A11	03			/		1					O	00	00	0	00	00

3: Connection

Bottom (6 o' clock)	01
Rear (6 o' clock)	02

4: Number of scales

1 or 2 scales	10
3 scales	11

A: Design

Case: black	01
Case: St. Steel	41

C: Mounting

Direct mounting	0
Rear flange, black	1
Rear flange, AISI316	2
Front flange, black	3
Front flange, AISI316	6
Front flange, AISI316 polished	7
Clamp fixing kit AISI316	9

E: Scale in bar, kPa, MPa and °C	(Freon) Brass	(R717) Steel
	-1-0+12	07
-1-0+15	08	48*4
-1-0+25	11	51
-1-0+30	12	52*4
psi and °F		
-30"Hg-0+160	02	66*4
-30"Hg-0+170	13	53
-30"Hg-0+350	03	67
-30"Hg-0+400	04	68*4
kPa and °C		
-100-0+1200	28	34
-100-0+1600	29	35*4
-100-0+2500	30	36
0-2000	25	31*4
0-2500	26	32*4
0-3500	27	33*4

F: Scales for 1 refrigerant

R12	10	R407A, dew point	30
R13	11	R407A, bubble pt.	31
R13B1	12	R407A, mean point	36
R22	13	R407B, dew point	32
R23	50	R407B, bubble pt.	33
R32	51	R407C, dew point	34
R114	14	R407C, bubble pt.	35
R123	21	R408A	39
R134A	23	R410A	41
R227	22	R500	15
		R502	16
R402A	53	R503	17
R404A	24	R507	54
		R717	19

F: Scales for 2 refrigerants

R12 + R22	18
R22 + R134a	25
R404A + R134a	26

F: Scales for 3 refrigerants

R12 + R502 + R22	20
R404A + R134a + R22	27

G: Damping

Not damped (normal)	0
Throttle screw, std., brass	1
Throttle screw, std., AISI316	2

D: Connector/gasket	Brass	Steel	AISI316
Without connector	00	00*	00*
G1/8B / PTFE	01		61
1/8NPT / PTFE	02		62
G1/4B / PTFE	06	36 *4	66
1/4NPT / PTFE	07	37*4	67
1/4flare / PTFE	09		69
G3/8B / PTFE	11	41*4	71
G1/2B / PTFE	16	46*4	76
1/2NPT / PTFE*4	17*4		77
G1/2B DIN / PTFE*4	18*4	48*4	78*4
M12 / Ø6 / PTFE		58	88
M14 / Ø6 / PTFE		57*4	
M14 / Ø8 / PTFE		59	89*4

Dok.: Manometer, køl, duplex